

MECHATROLINK News provides members of the MMA with the latest information on MECHATROLINK

Exhibition at aimex2010 (Korea)

The MECHATROLINK Members Association (MMA) will participate in the aimex2010 in Seoul, Korea, Mar. 3(Wed) - 6(Sat), 2010. The AIMEX is an exhibition that encompasses every industrial automation related sector, and aims to innovate automation related products and technologies. At the MMA booth, we will demonstrate MECHATROLINK compliant products and the MMA member companies will display their products. We are looking forward to seeing you at the exhibition.

aimex2010

Designation: Industrial Automation, Instrumentation & Measurement Exhibition (AIMEX) 2010.
Dates: Mar. 3(Wed) - 6(Sat.), 2010
Place: Coex, World Trade Center (Samseong-dong, Gangnam-gu, Seoul, Korea)
MMA Booth No.: B211
Details: Visit the organizer's website.
URL: <http://www.aimex.co.kr>

Demonstration of MECHATROLINK-Compliant Products Connectivity

- Digital Electronics Corp.
- YASKAWA ELECTRIC CORP.
- YOKOGAWA ELECTRIC CORP.
- ORIENTAL MOTOR Co., LTD.
- ANYWIRE CORP.
- TAITEC CO., LTD.
- , and others

MMA booth in aimex 2009 →

Products Displays

- TOKYO ELECTRON DEVICE LTD.
- BEST F.A
- JUSTEK
- Soft Servo Systems, Inc.



Exhibition at CCMT2010

The MMA will participate in the China CNC Machine Tool Fair (CCMT2010) in Beijing, China, April 12(Mon) - 16(Fri), 2010. The CCMT is recognized as the sister exhibition of CIMT (China International Machine Tool Show), which was held last year to exhibit a collection of various kinds of machine tools. CCMT2010 especially focuses on CNC (computerized numerical control). The MMA will exhibit the MECHATROLINK compatible CNCs manufactured by local Chinese member companies. We are looking forward to seeing you at the exhibition.

CCMT2010

Designation: China CNC Machine Tool Fair (CCMT2010)
Dates: Apr. 12(Mon) - 16(Fri), 2010
Place: Nanjing International Expo Center
Details: Visit the organizer's websites.
URL: <http://www.ccmtshow.com>
<http://www.cmtiba.org.cn>



MMA booth at CIMT in 2009

Customer Visit Report by Marketing Working Group

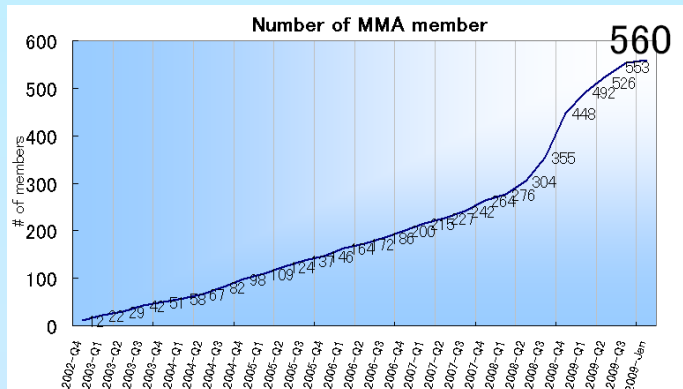
Sankyo Seisakusho Co. graciously invited the MMA marketing working group to visit its company location in Kikugawa, Shizuoka, Japan. The visit started with an introduction to Sankyo Seisakusho, followed by a factory tour, opinion exchange session, Q & A session, and MMA exhibition. 57 visitors from 22 different companies and the staff members of Sankyo Seisakusho participated in the event, which ended as a great success. In the opinion exchange session, participants discussed the theme of "Mechanics or Electronics?" A variety of opinions were exchanged by participants during the discussion.



Animated discussion during exchange-opinion session

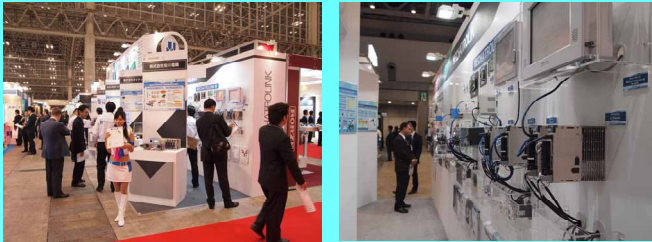
Increase in MMA Members

536 companies (Nov., 2009) ⇒ 560 companies (Jan., 2010)
An increase of 24 companies since the end of Nov., 2009 when Vol. 16 was issued!



System Control Fair 2009 and SEMICON 2009 Participation Reports

The MMA participated in the System Control Fair 2009 at Tokyo Big Sight and SEMICON Japan 2009 at Makuhari Messe.



We used panels with improved contents that include new products. Our exhibition included the MECHATROLINK-III Master/Slave IP core that can build the control layer of MECHATROLINK-III in FPGA instead of ASIC, as well as the MECHATROLINK protocol stack that can work as a master on Windows without using ASIC. These exhibitions attracted a great many of the people in attendance.

Number of Visitors to MMA Booth (Based on the number of visitors who answered the questionnaire)	
System Control Fair 2009	1011
SEMICON2009	548

New MECHATROLINK Products

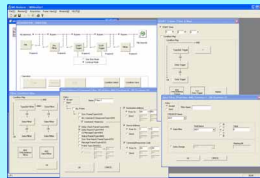
We introduce two MECHATROLINK compliant products by MMA member companies.

Sky Link Corporation

MECHATROLINK-III Analyzer

Model: SK02-M3-PCI
SK02-M3-CARD

Features:



- The analyzer dedicated to MECHATROLINK-III (MMA communication specifications). Can analyze all frames because it does not use the ASIC for M-III(JL-100).
- The improved filter function allows you to set a total of 18 filters with AND/OR conditions, as well as to set the trigger function (pre-trigger and after-trigger) at the same time.
- Can write user-defined commands in the command definition file. (Filtering can be done at the same time.)
- Can set the filter function to display data after data gathering (capturing function), and can also display user-specified fields of M-III protocol.

Model SK02-M3-PCI: PCI board type	
Interface	Standard PCI bus
Connector	RJ45 (female)
PC	PC/AT compatibles (Desktop PC)
CPU	Intel Pentium 4 or faster
Model SK02-M3-CARD: PCMCIA card type	
Interface	PC Card Standard (CardBus), Type II
Connector	RJ45 (female)
PC	Notebook PC
CPU	Intel Pentium M 1.6GHz or faster

Standard price: 148,000 JPY (Tax not included)

Inquires: Sky Link Corporation, R & D Dept.
1-20-24 Sanjyo, Dazaifu, Fukuoka, Japan 818-0111
TEL/FAX: +81-92-555-9572
e-mail: info@sky-link.jp
URL: http://www.sky-link.jp/

ORIENTAL MOTOR Co., LTD.

Network Converter for Control of Motor Drives

Model: NETC01-M2

Features: Network converter model NETC01-M2 is a protocol converter designed to serve between MECHATROLINK-II communication protocol and Oriental Motor RS485 communication protocol. The NETC01-M2 allows the MECHATROLINK-II master to control Oriental Motor RS485 compatible products (up to 16 axes) by using intelligent I/O commands with no special data conversion. Oriental Motor plans to expand applications one at a time to NETC01-M2 connectable products, with stepping motors as key products, to actuators including sliders and cylinders, and to brushless motors.



Model: NETC01-M3

Features: Network converter model NETC01-M3 is a protocol converter designed to serve between MECHATROLINK-III communication protocol and Oriental Motor RS485 communication protocol. The NETC01-M3 allows the MECHATROLINK-III master to control Oriental Motor RS485 compatible products (up to 16 axes) by using intelligent I/O commands with no special data conversion. Oriental Motor plans to expand applications one at a time to NETC01-M3 connectable products, with stepping motors as key products, to actuators including sliders and cylinders, and to brushless motors.



NETC01-M2

Transmission speed: 10 Mbps
Transmission cycle: 0.5/1.0/1.5/
2.0/2.5/3.0/3.5/4.0/8.0 [ms]
Station address: 60h to 7Fh
Available commands: Intelligent
I/O communication commands
No. of connectable axes: 16 max.

NETC01-M3

Transmission speed: 100 Mbps
Transmission cycle: 0.5/1.0/1.5/
2.0/2.5/3.0/3.5/4.0/8.0 [ms]
Station address: 03h to EFh
Available commands:
MECHATROLINK-III standard
I/O profile
No. of connectable axes: 16 max.

RS485 Communication Specifications

Electrical characteristics: Conform to EIA-485
Transmission speed: 625 Kbps
Physical layer: Asynchronous (8 bits, 1 stop-bit,
no parity)
Protocol: GW protocol Ver.2 (Oriental Motor's unique, open
protocol)

Inquires: ORIENTAL MOTOR Co., LTD.

Product Planning Dept.
6-16-17 Ueno, Taito-ku, Tokyo, Japan 110-8536
TEL: +81-3-3835-0681 FAX: +81-3-3835-1869

New MMA Members

Agile Planet, Inc., APLUS, COMS Co., Ltd., CSCAM Co., Ltd., Gh(nanjing) Automatic System Co., Ltd., Link Plan Co., Ltd., Machine Drive Company, Motion System Corp., NIPPON PULSE MOTOR TRADING (TAIWAN) CO., LTD., Sarl VERTEX, Shanghai Haga Electric Co., LTD., Shanghai Jiatai Machinery & Electrical Equipment Co., Ltd., Shenzhen Hanuc Numerical Control Technology CO., LTD., WAGO Company of Japan, Ltd., WeiYi M&E Equipment (Shanghai) Co., Ltd., Wuhan Penta Chutian Laser
(Only those companies that gave us permission for disclosure are listed here.)

Future Events

Feb. 3-5, 2010: Technology Seminar (Taipei/Taichung/Tainan, Taiwan)
Mar. 3-6, 2010: AIMEX2010 (Seoul, Korea)
Mar. 8, 2010: MECHATROLINK Seminar (Osaka, Japan)

Inquires:

For questions about joining the MECHATROLINK Members Association and other inquires, please contact the MMA.

Issued: Feb. 4, 2010

Publishing: MECHATROLINK Members Association

Kamifujisawa 480, Iruma, Saitama, Japan 358-8555

TEL: +81-4-2962-7920 FAX: +81-4-2962-5913

e-mail : mma@mechatrolink.org

URL : http://www.mechatrolink.org/

Executive Editor: Takashi Tanaka, General Secretary of
MECHATROLINK Members Association